

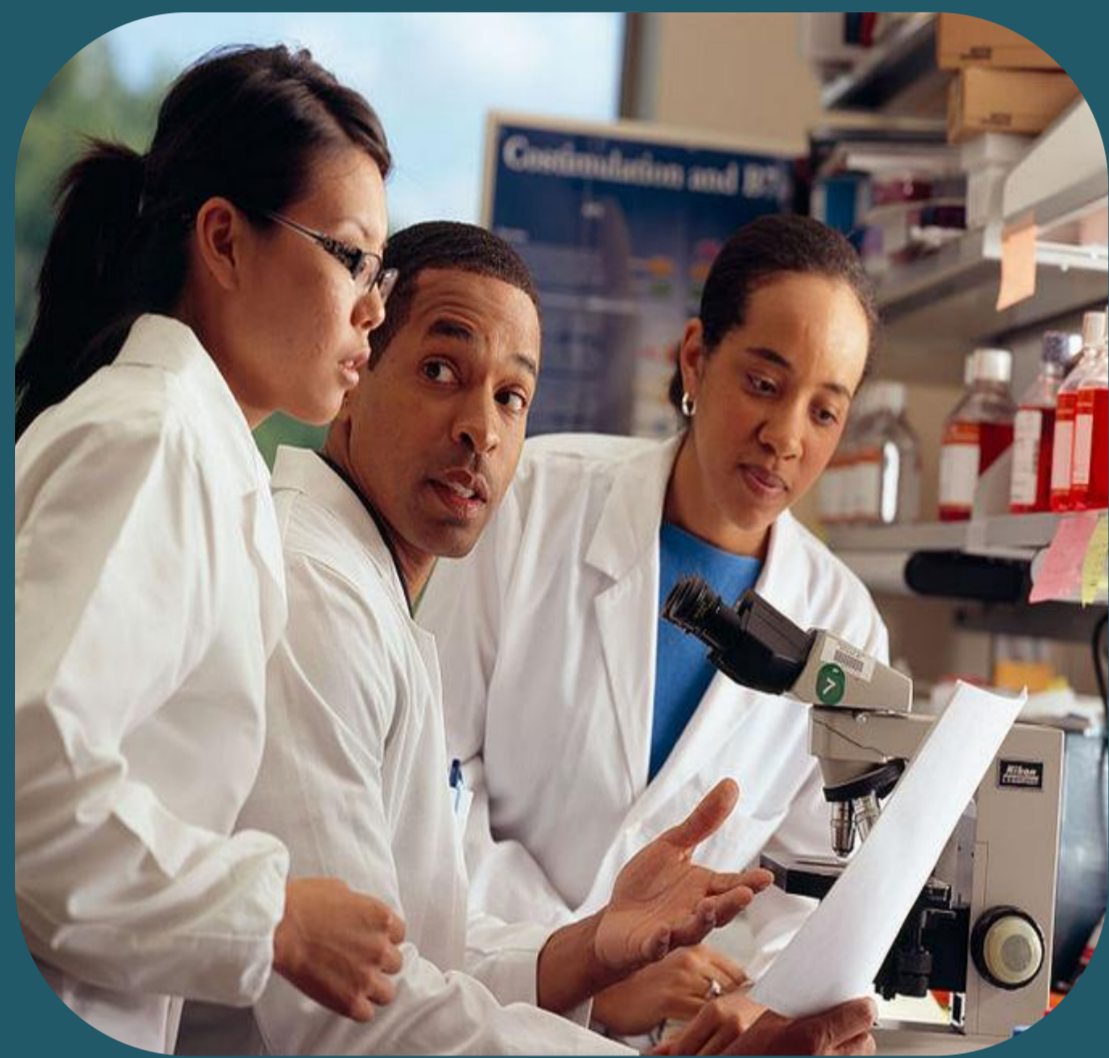
Enhancing Feasibility: Linking Together

Authors: Shahista Hussain, R&D Manager; Fiona Parker, R&D Manager

Impact to Researchers

Accurate assessment of feasibility enables:

- 1) Collaborative working with Trust researchers
- 2) Sign-posting to all relevant support departments; ensuring timely communication and prioritisation.
- 3) Effective implementation of key changes.
- 4) Agreement of meaningful and achievable study targets:
 - a) Reflecting on competing research activity
 - b) Available eligible patients,
 - c) Including those with rare diseases.
- 5) The main aspects of the project to be addressed efficiently.



Adaptability

Feasibility assessment has achieved a culture which:

- 1) Adapted in response to the changing research landscape and the requirements of the organisational implementation of HRA approval process.
- 2) Enabled a more consistent flow of information across all research-active departments within OUH.
- 3) Supported research teams in delivering trials/studies successfully at site.

Feasibility assessments have been conducted since the inception of the NIHR; based on the CRN geography and limited to high level review of projects.

The Oxford University Hospitals NHS Foundation Trust (OUH), which conducts a broad and diverse clinical research portfolio in excess of 1,800 studies, has:

- Identified significant enhancements for assessing feasibility at local Trust levels.
- Introduced feasibility questionnaires to promote better communication during study set up.



Our research portfolio management system ensures integration of feasibility assessment information as demonstrated in Fig 3.

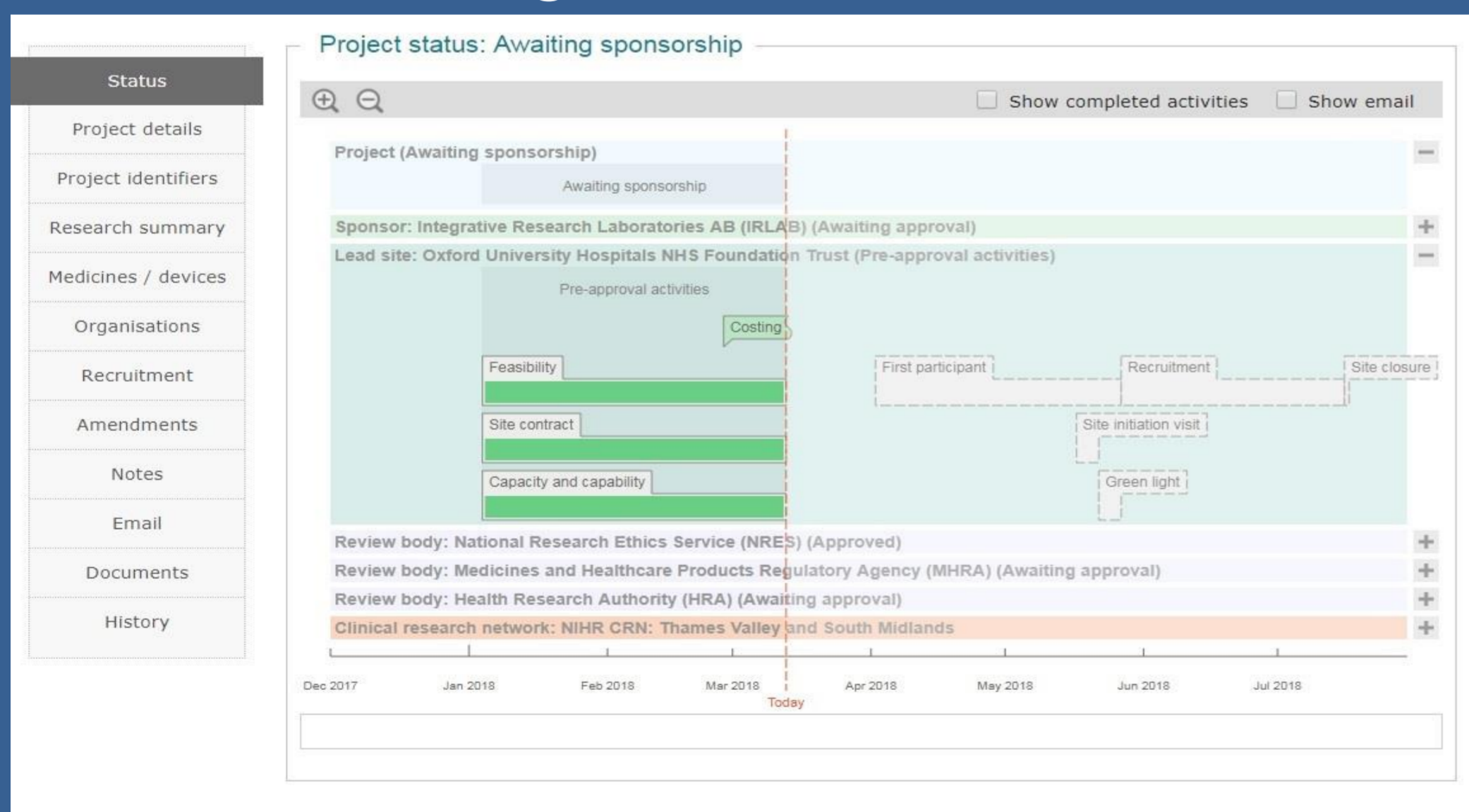


Fig 3
Visibility of processes & key study data in Studyline:
1) Provides a clear definition of the targets.
2) Allows prompt follow up within the system.
3) Enables swift resolution of discrepancies and queries regarding targets and delays.

NIHR Contracted Metrics

Implementation and adaptation of the feasibility assessment has enabled us to:

- 1) Improve performance in first participant recruitment (Fig 1)

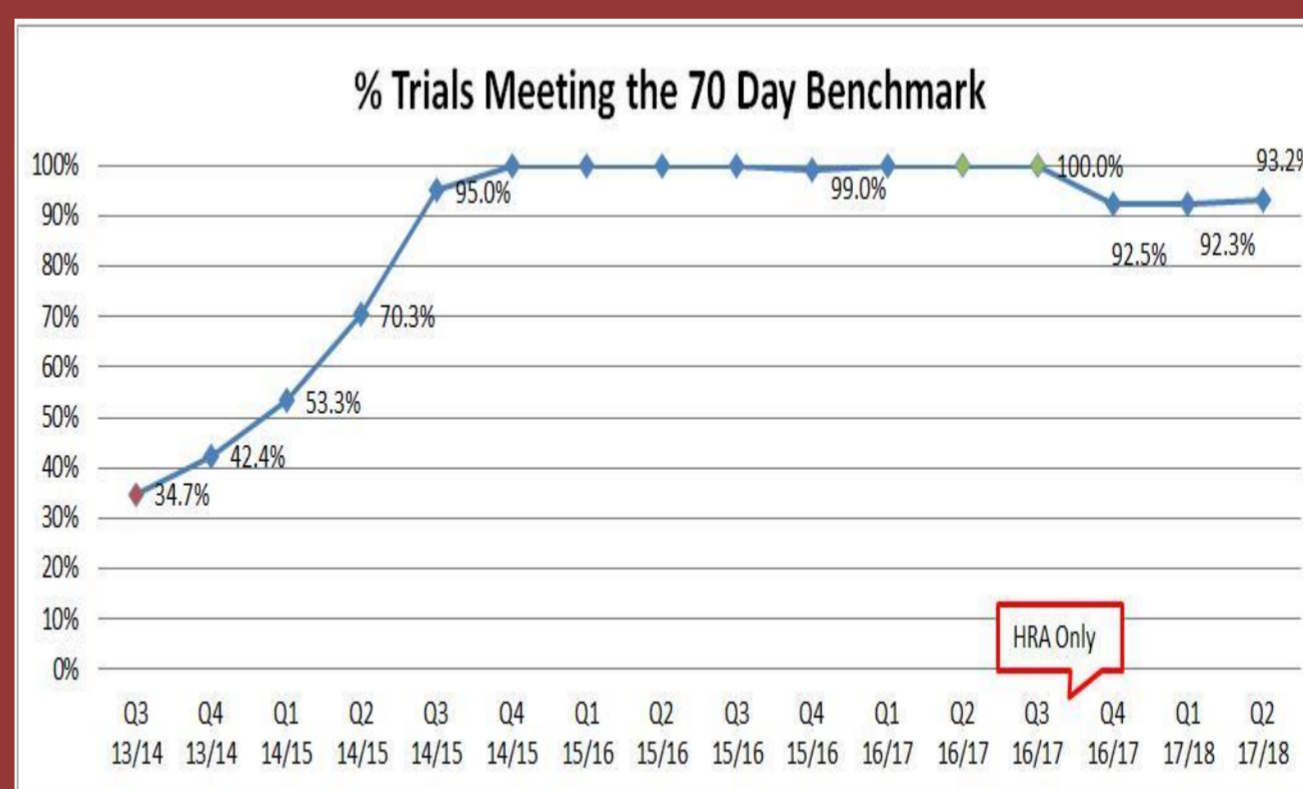


Fig 1

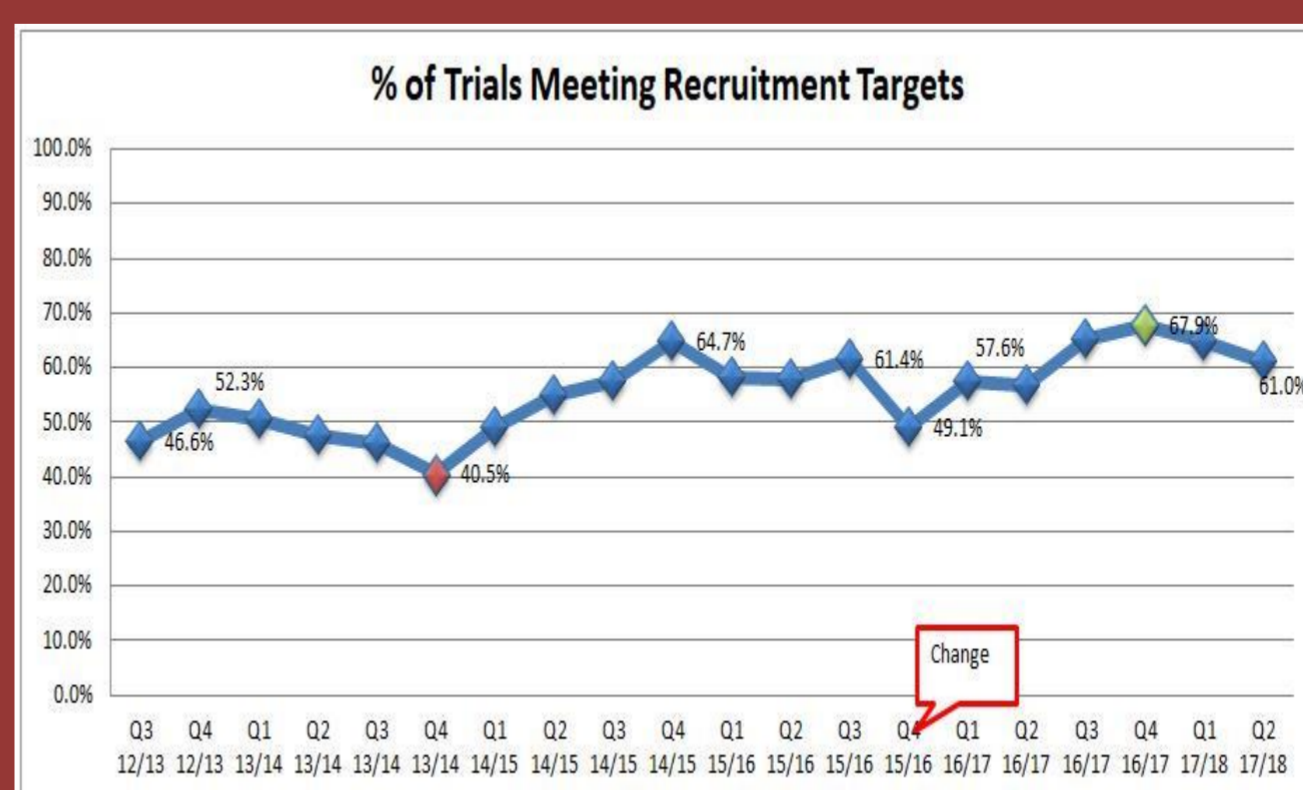


Fig 2

and research delivery year on year (Fig 2).

- 2) Consistently one of the top five NHS organisations in the NIHR Research Activity League Table.

