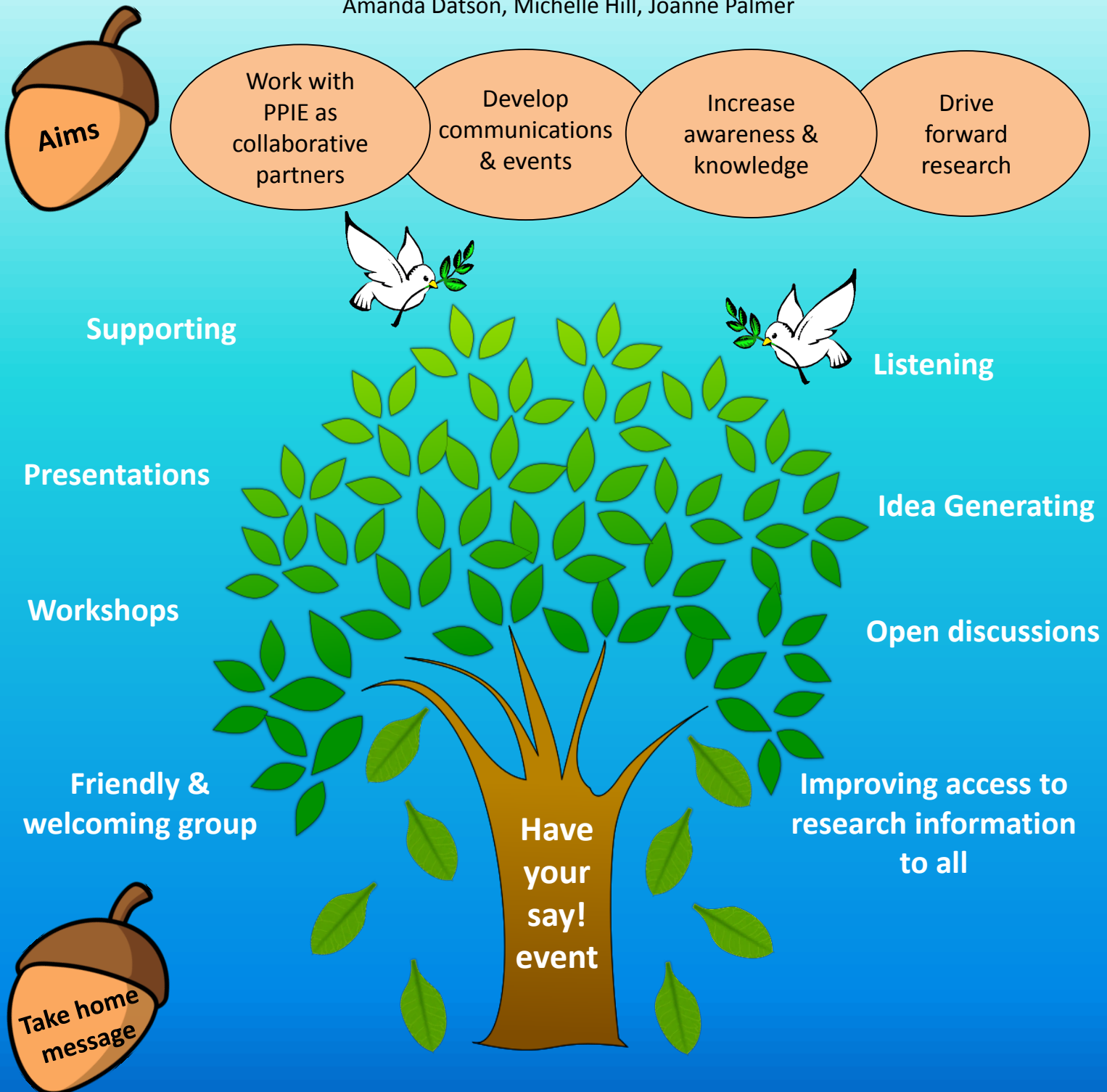


Establishing a Patient & Public Involvement and Engagement (PPIE) Research Communication Strategy Working Group

Amanda Datson, Michelle Hill, Joanne Palmer



Our ethos is to listen and respond by using the mechanism, 'you said, we did'. This has been fundamental in creating an effective communication strategy, ensuring the work we do is fit for purpose.

Working collaboratively with members of the public has been vital to achieving the national and local PPIE agenda.